

Replacing a Thermostatic Core/Cartridge *a passion for showers*

Thermostatic cores are often supplied 'wet' this is because they are tested during the production.

BEFORE STARTING ENSURE THAT THE WATER & ELECTRICAL SUPPLIES ARE DISCONNECTED

It is imperative that you check and ensure that the water supply to your shower is balanced (equal pressure from the hot and cold) with a pressure of between 1 and 3 bar as an imbalance will damage the core. Fitting a Pressure Equalising Valve (PEV) is perhaps the simplest way to balance your water pressures and is ideal for Combi Boiler systems.

1. Remove the temperature selector control knob.



2. Remove the Plastic Temperature Safety Guard from the Brass spline.

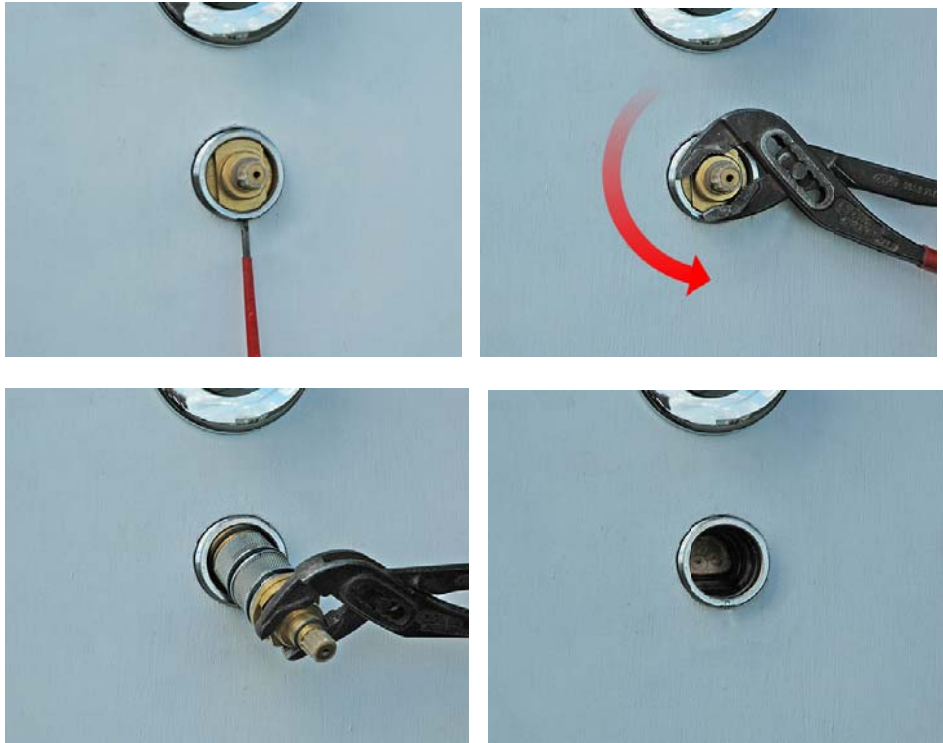


3. Unscrew chrome Temperature face plate as shown.



4. Remove the retaining grub screw, then using pipe grips as shown in photo, twist the thermostat core left and right whilst pulling it from its housing. (It is held in position by a rubber washer so you will feel it pop out of position)

NOTE: If there is no visible Grub Screw to remove, then your core may be a Threaded type (Model No 8). To remove this Core, simple rotate Anti-Clockwise until free.



5. Refitting the new thermostat is a reversal of the above.



Model No 12



Model No 6



Model No 8